



META 28

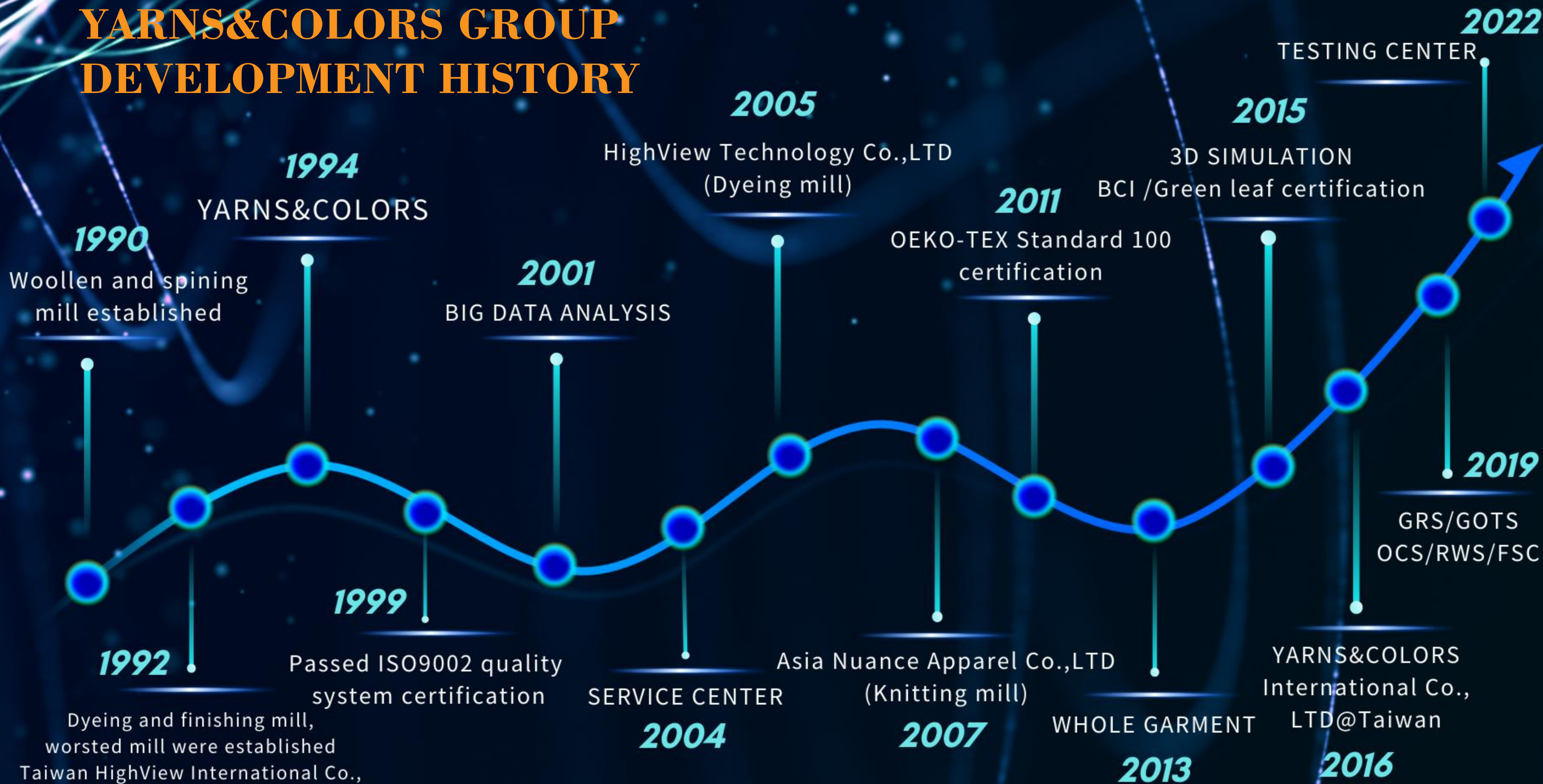
YARNS&COLORS

GROUP

YARNS & COLORS

PROFILE OF
YARNS&COLORS GROUP

YARNS&COLORS GROUP DEVELOPMENT HISTORY



Y&C GROUP SYSTEMATIC MANAGEMENT

DESIGN &
DEVELOPMENT

IN HOUSE
TESTING CENTER

SUSTAINABILITY

META
3D SIMULATION

ERP/BI/APP

ONLINE
PLATFORM

VERTICAL
SUPPLY CHAIN

GLOBAL NETWORK
SERVICES



YEARLY TURNOVER

PROFESSIONAL TEST CENTRE



Thermostatic Lab



Routine Lab



Flat Machine Lab



2023: CMA



2024: CNAS



SUSTAINABILITY-CERTIFICATES



**CLIMATE
ACTION**

**CARBON
NEUTRAL**



Ø ZDHC



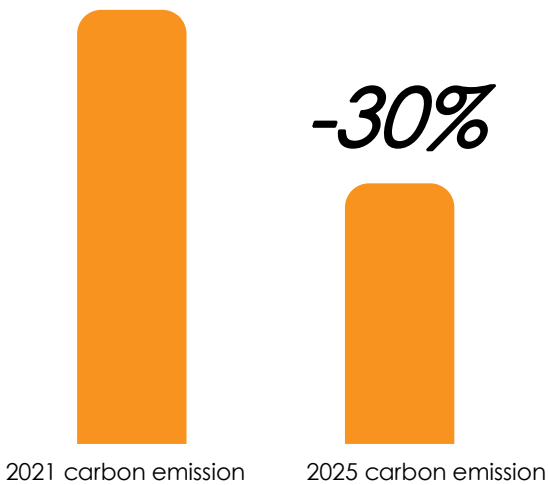
**GREEN RAW
MATERIALS**

LIFE ON LAND



SUSTAINABILITY-CARBON NEUTRAL

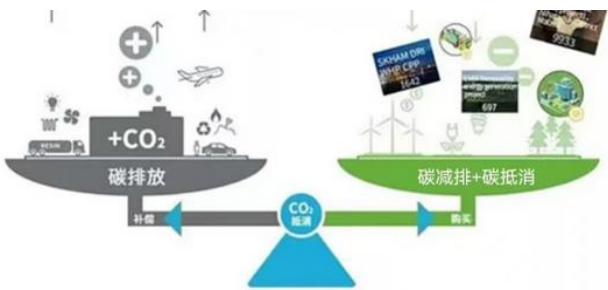
Goal 1



To reduce company CO2 emissions by 30% by 2025 compared to 2021

Goal 2

To truly achieve carbon neutrality by 2050



1CO2=1 ton of CO2 emission reduction

Goal 3

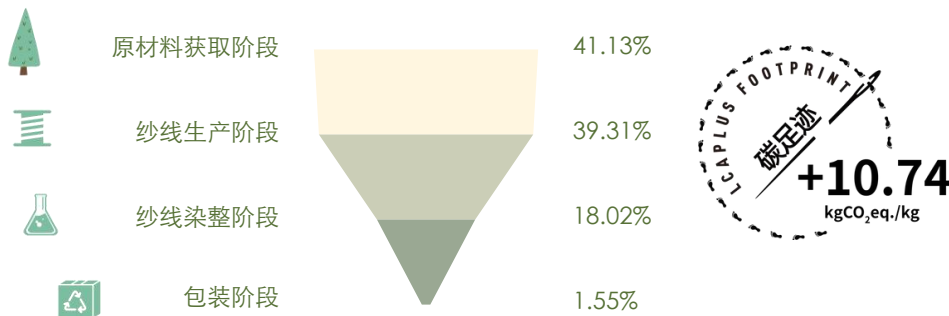
Carbon f of snowy and Athena products + LCA life cycle assessment to finally achieve net zero emissions



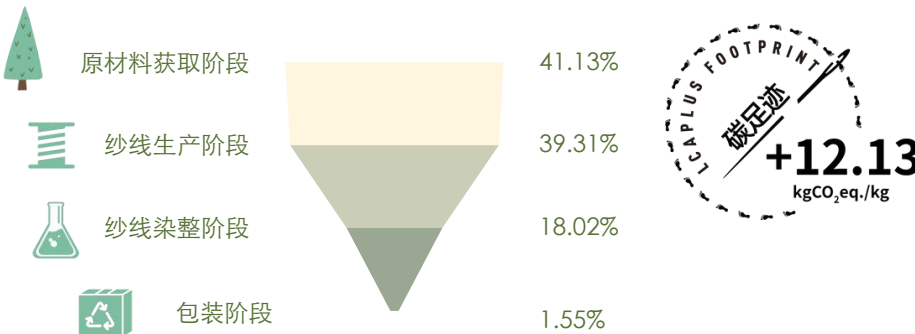
- Carbon emissions,
- Product hazards,
- At the same time, have a positive impact on society



LCAPLUS Footprint For SNOWY®

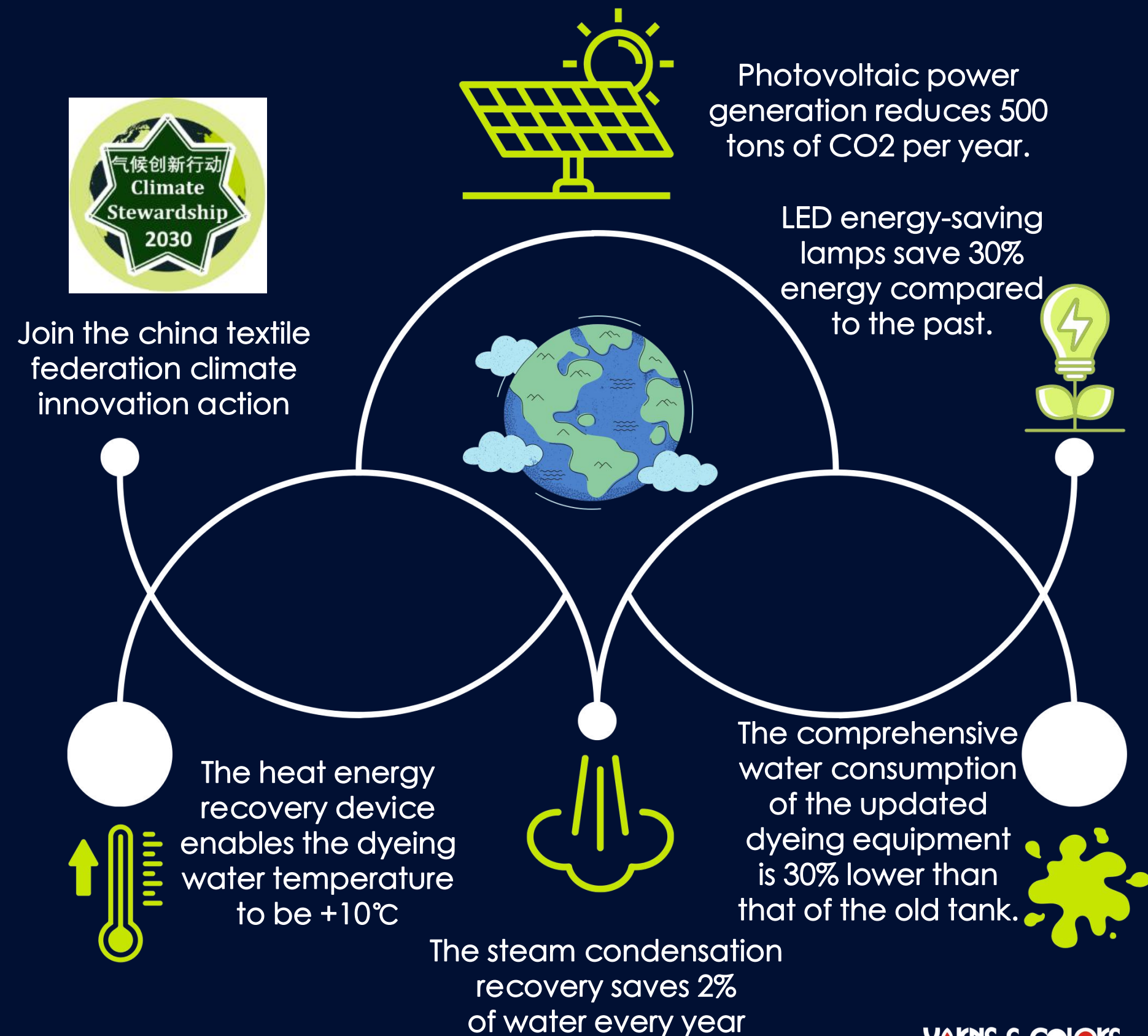


LCAPLUS Footprint For ATHENA



数据计算: CNTAC-LCA工作组LCAPLUS系统
核算边界:
系统边界: 摇篮到大门 (Cradle to Gate)
实测边界: PBT聚酯切片生产到纱线成品

Carbon emission reduction measures to help the planet



Join the china textile federation climate innovation action

GLOBAL NETWORK

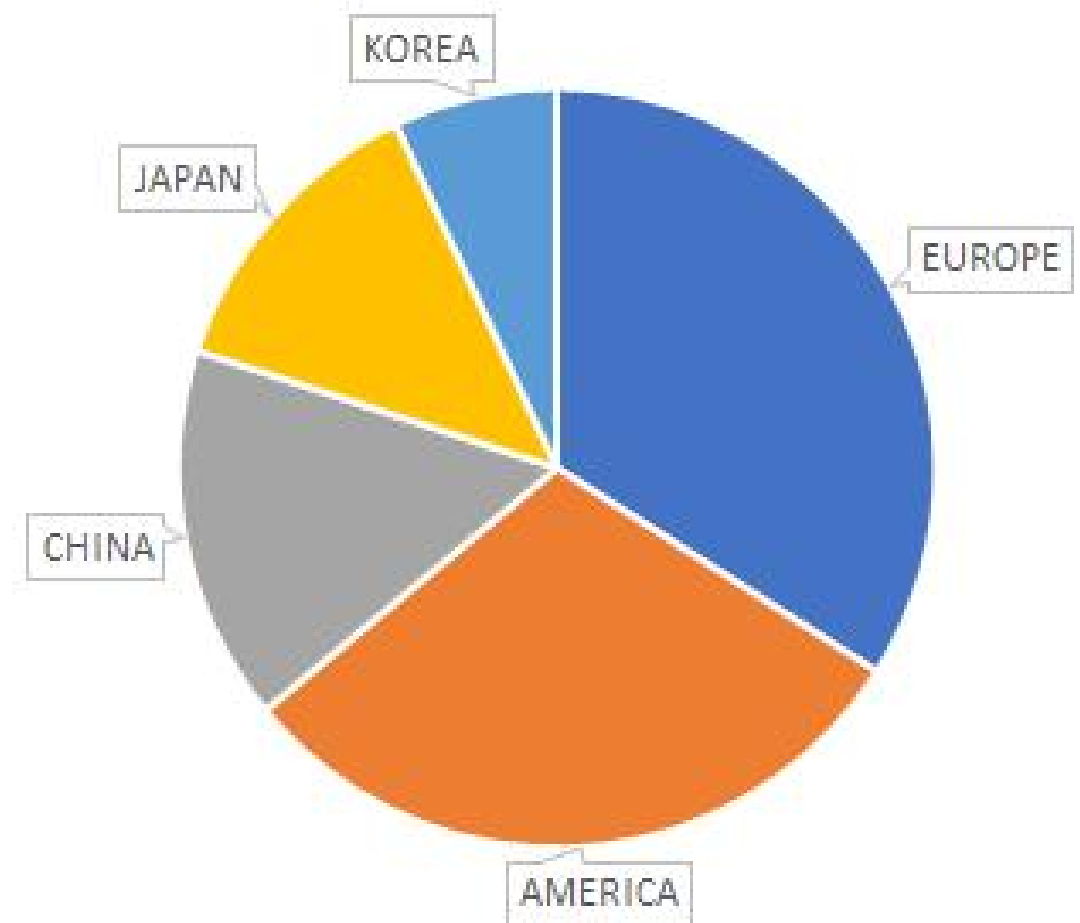


AGENTS

USA/New York
 JAPAN/Tokyo
 UNITED KINGDOM/Wymeswold
 GERMANY/Kaufering
 FRANCE/Maroq en
 RUSSIA/Moscow
 SPAIN/Barcellona
 TURKEY/Istanbul
 PORTUGAL/Povoa Do Varzim
 KOREA/Seoul
 BANGLADESH/Dhaka

OFFICES/FACTORIES

HQ CHINA/Suzhou
 CHINA TAIWAN/Taipei
 ITALY/Biella
 JAPAN/Tokyo



MARKET SHARE OF DIFFERENT AREA

YARNS & COLORS

YARNS & COLORS
THANKS !



ONLINE



WECHAT

CONTACT

E-mail: sales@yarnscolors.com

CHINA TEL: +8-51266291126

TAIWAN TEL: +886-2-26973963

ITALY TEL: +39-0158494380