



META 28

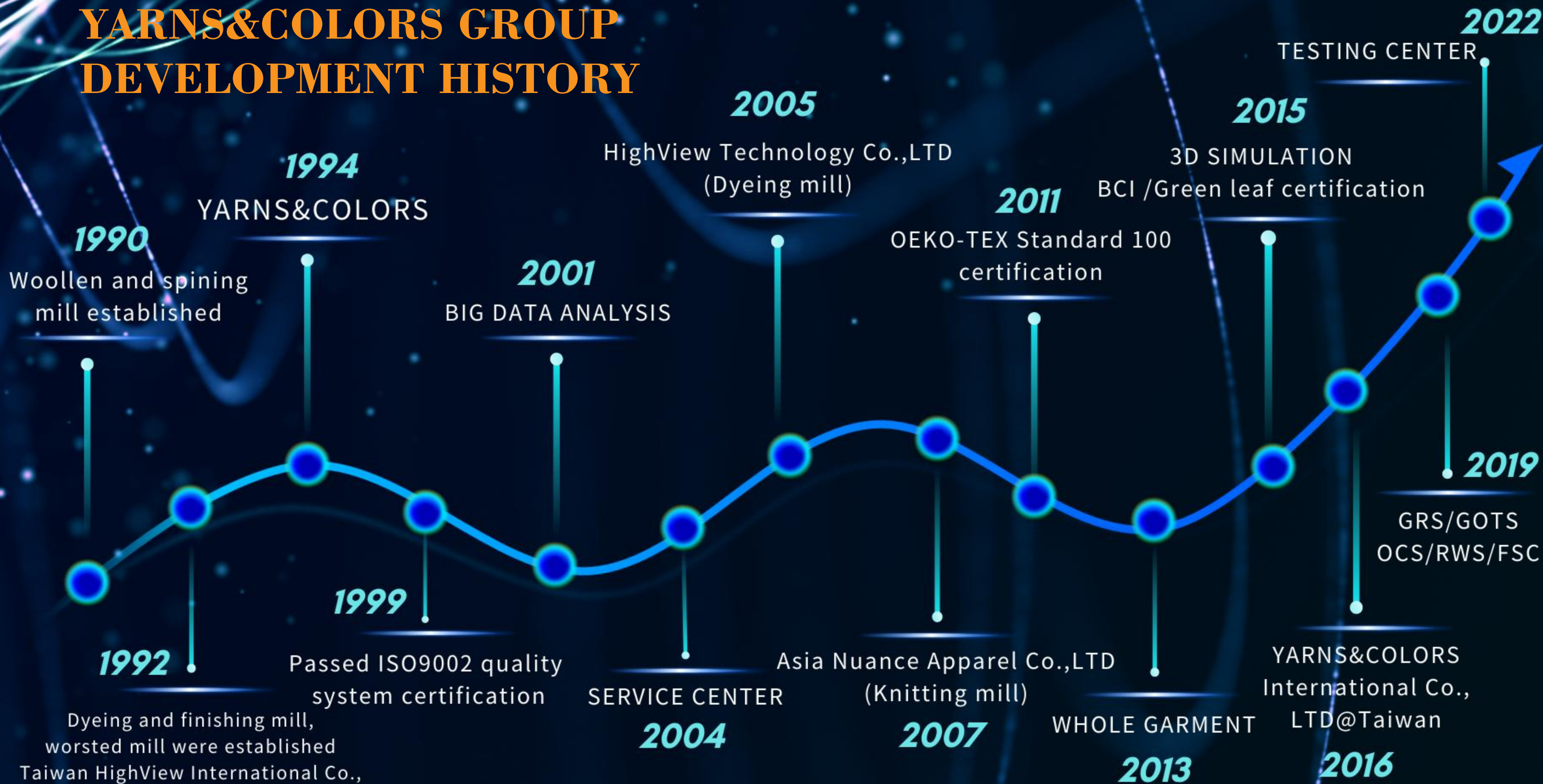
YARNS&COLORS

GROUP

YARNS & COLORS

PROFILE OF
YARNS&COLORS GROUP

YARNS&COLORS GROUP DEVELOPMENT HISTORY



Y&C GROUP SYSTEMATIC MANAGEMENT

DESIGN &
DEVELOPMENT

IN HOUSE
TESTING CENTER

SUSTAINABILITY

META
3D SIMULATION

ERP/BI/APP

ONLINE
PLATFORM

VERTICAL
SUPPLY CHAIN

GLOBAL NETWORK
SERVICES

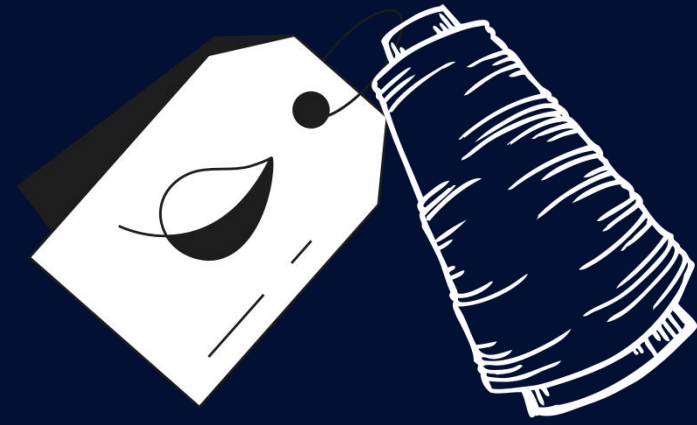


YEARLY TURNOVER

YEARLY YIELD OF YARN



Spinning A Better Future

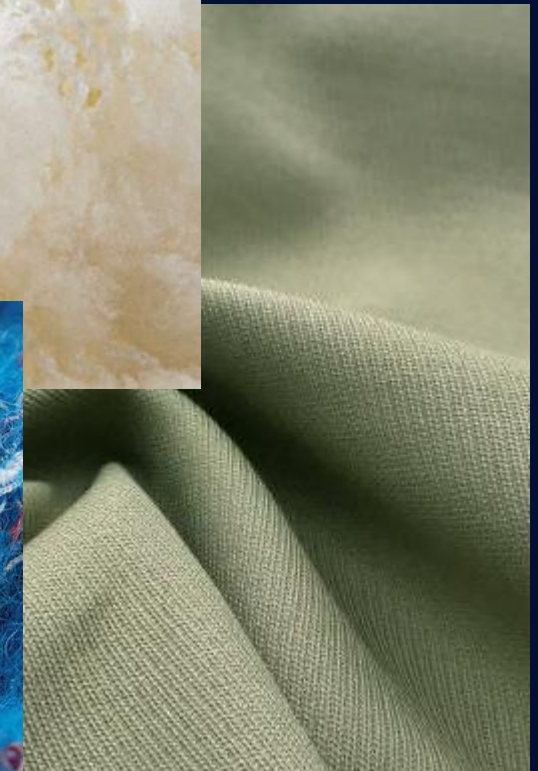
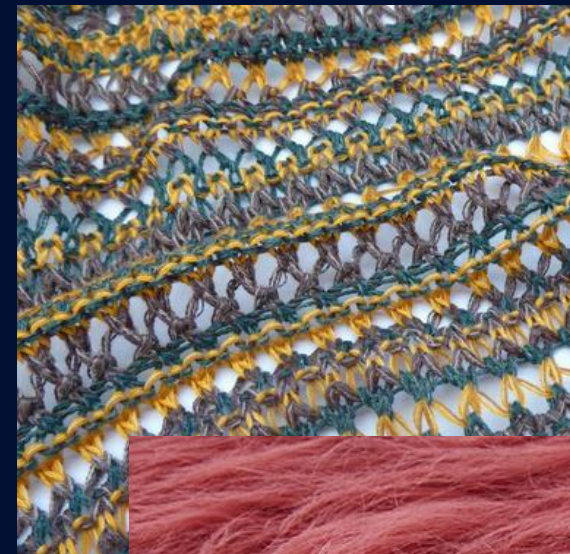


R&D

-TREND DEVELOPMENT -CUSTOMISED DEVELOPMENT

These raw materials are then blended together with special dyeing technology to create an array of over **1,000 unique** types of yarn such as **worsted, woollen, and fancy**, so that we are able to satisfy the **customers'** various requests.

Our company combines the whole spinning and dyeing process by using different machinery. Through the global sales network, we integrated raw material supply chain that will provide the latest **trend** in our products, new resources, and solutions.



SUSTAINABILITY-CERTIFICATES



**CLIMATE
ACTION**

**CARBON
NEUTRAL**



Ø ZDHC



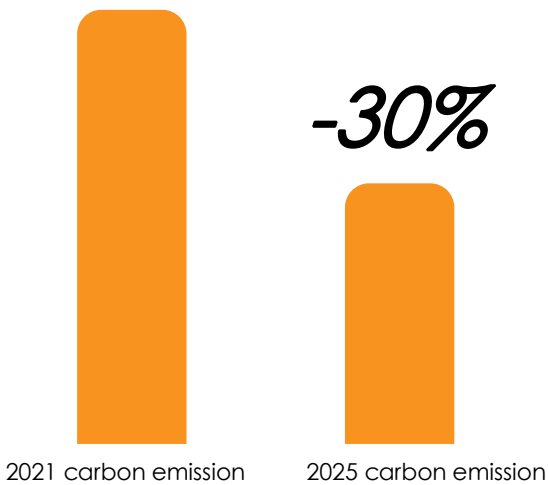
**GREEN RAW
MATERIALS**

LIFE ON LAND



SUSTAINABILITY-CARBON NEUTRAL

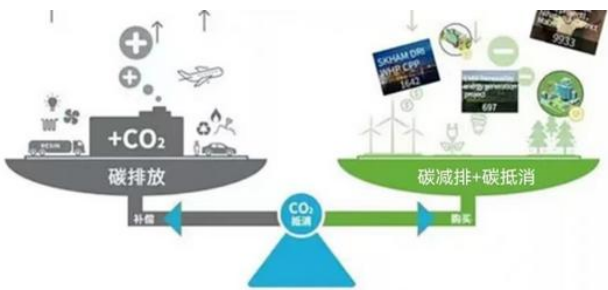
Goal 1



To reduce company CO2 emissions by 30% by 2025 compared to 2021

Goal 2

To truly achieve carbon neutrality by 2050



1CO2=1 ton of CO2 emission reduction

Goal 3

Carbon f of snowy and Athena products + LCA life cycle assessment to finally achieve net zero emissions



- Carbon emissions,
- Product hazards,
- At the same time, have a positive impact on society



LCAPLUS Footprint For SNOWY®



原材料获取阶段

41.13%



纱线生产阶段

39.31%



纱线染整阶段

18.02%



包装阶段

1.55%



LCAPLUS Footprint For ATHENA



原材料获取阶段

41.13%



纱线生产阶段

39.31%



纱线染整阶段

18.02%



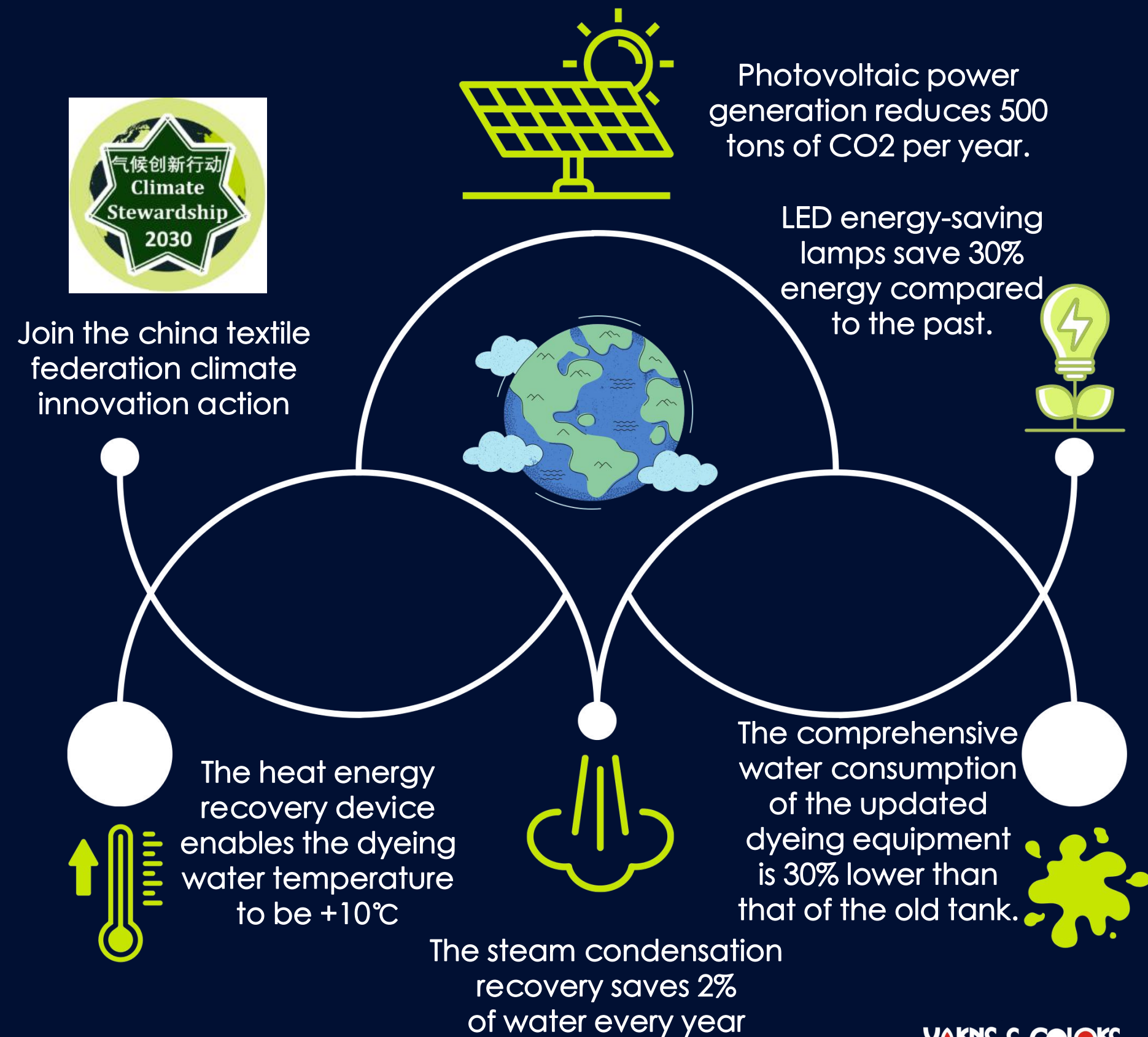
包装阶段

1.55%



数据计算: CNTAC-LCA工作组LCAPLUS系统
核算边界:
系统边界: 摇篮到大门 (Cradle to Gate)
实测边界: PBT聚酯切片生产到纱线成品

Carbon emission reduction measures to help the planet



Join the china textile federation climate innovation action

GLOBAL NETWORK

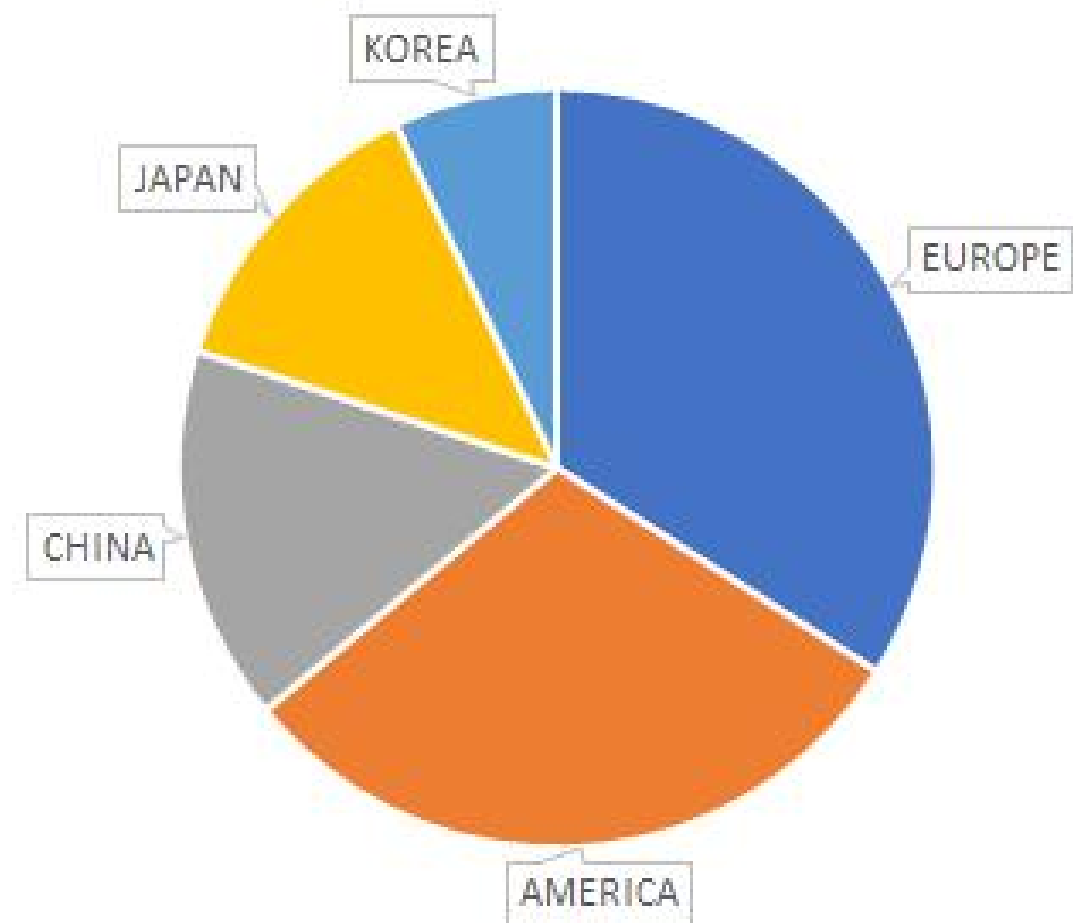


AGENTS

USA/New York
 JAPAN/Tokyo
 UNITED KINGDOM/Wymeswold
 GERMANY/Kaufering
 FRANCE/Maroq en
 RUSSIA/Moscow
 SPAIN/Barcellona
 TURKEY/Istanbul
 PORTUGAL/Povoa Do Varzim
 KOREA/Seoul
 BANGLADESH/Dhaka

OFFICES/FACTORIES

HQ CHINA/Suzhou
 CHINA TAIWAN/Taipei
 ITALY/Biella
 JAPAN/Tokyo



MARKET SHARE OF DIFFERENT AREA

YARNS & COLORS

YARNS & COLORS
THANKS !



ONLINE



WECHAT

CONTACT

E-mail: sales@yarnscolors.com

CHINA TEL: +8-51266291126

TAIWAN TEL: +886-2-26973963

ITALY TEL: +39-0158494380